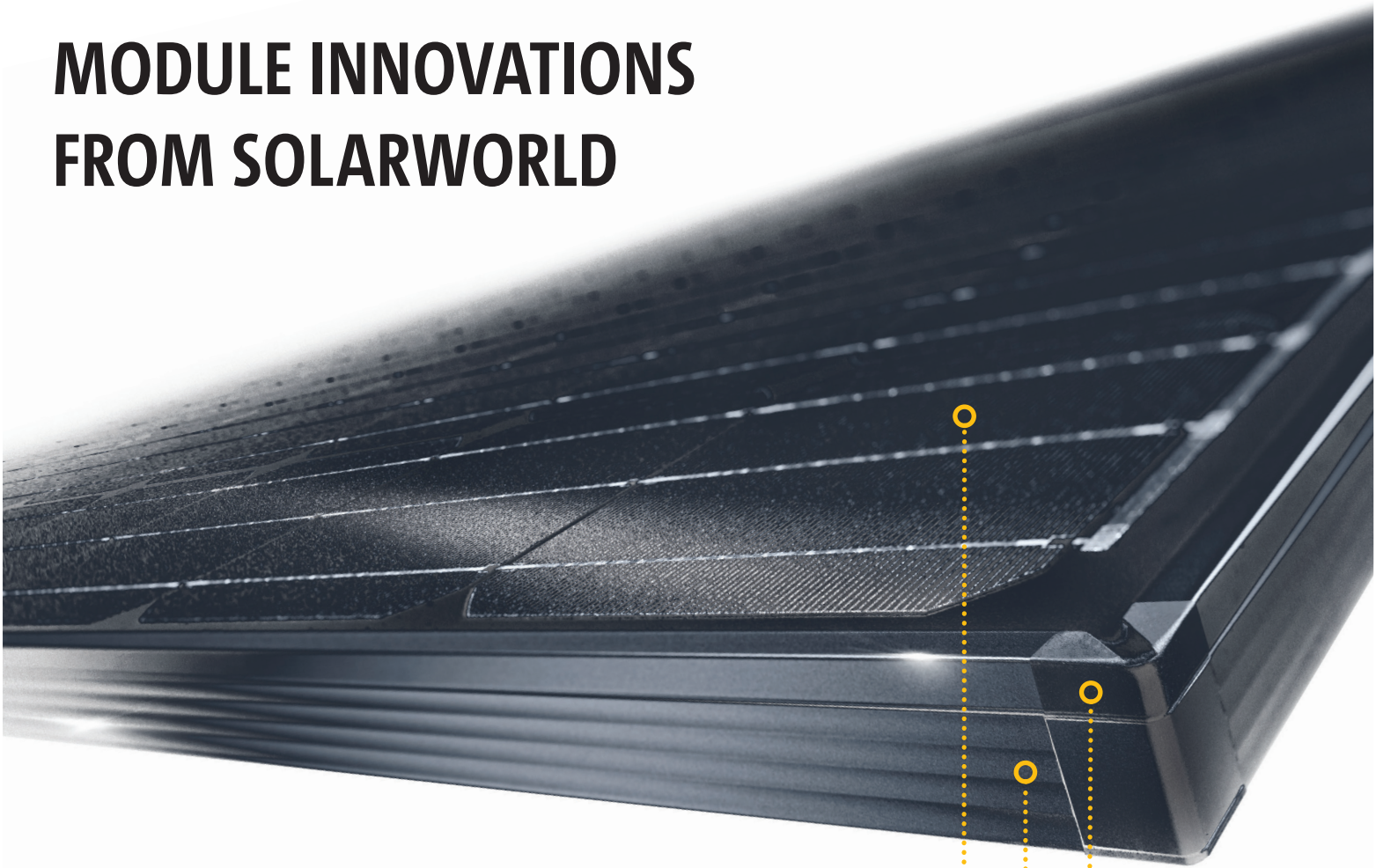


REAL VALUE



MODULE INNOVATIONS FROM SOLARWORLD



AESTHETICS

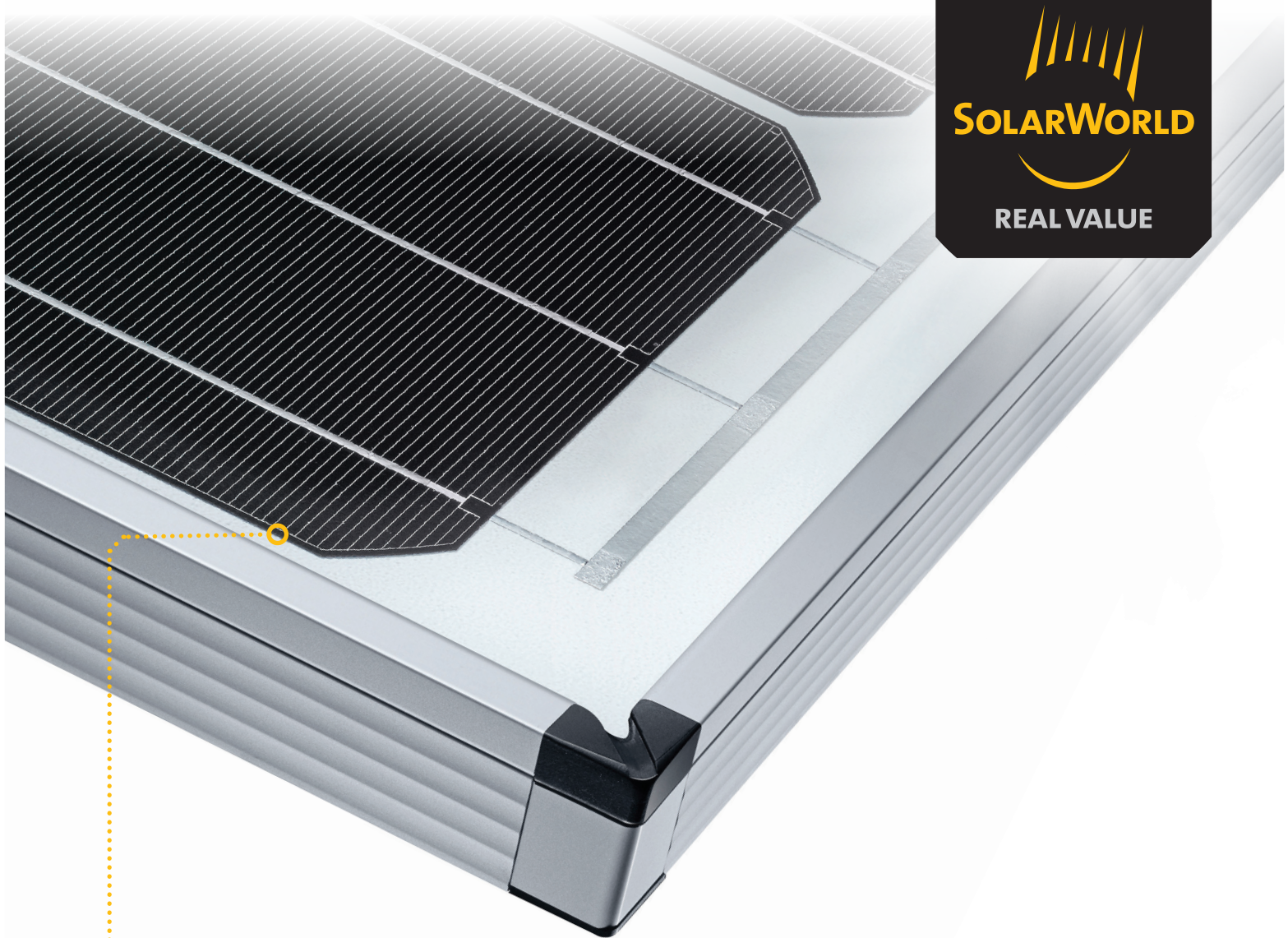
For the first time, we are offering a completely black solar module, including the cells, the frame and the corners.

MODULE FRAME

The new 33-mm module frame delivers unrivaled stability with its reinforced, wave-shaped profile. The new frame is much easier to handle during installation and more scratch resistant.

MODULE CORNER

The new integrated water drainage feature decreases the amount of water accumulation on the module, increasing long-term energy yield.

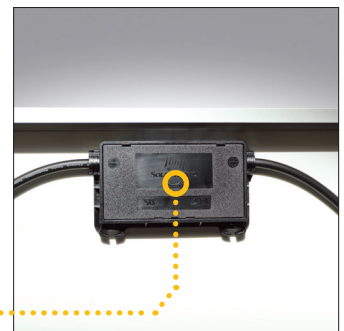


CELL MATRIX

Greater cell spacing ensures a higher module energy yield. Greater cell-to-frame spacing also minimizes the risk of performance losses by minimizing shading caused by dirt accumulation at the frame edges.

JUNCTION BOX

The welded, fully encapsulated junction box includes Amphenol H4 plugs, which can be mounted on all certified solar cables.



MODULE FRAME

The new rear flange facilitates attachment and grounding from the backside. The enhanced clamping option on the short-side of the module ensures maximum flexibility during installation.

